



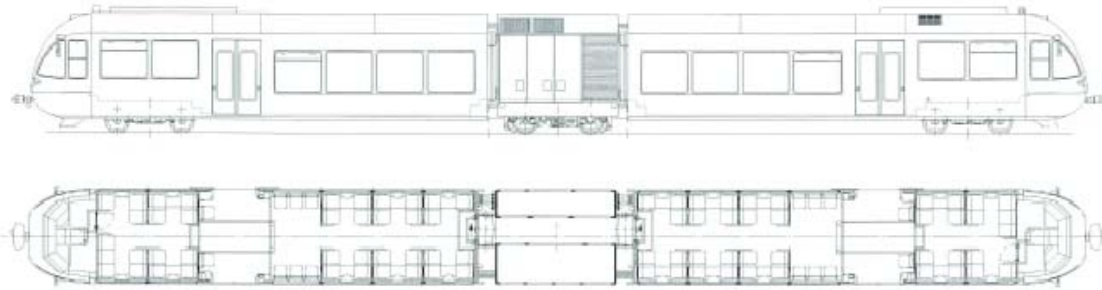
GTW 2/6 low floor articulated DMUs for Hellenic Railways Organisation (OSE)

Hellenic Railway organisation (OSE) has made large investments in the extension of the normal gauge network. For this reason OSE has ordered in 1999 a total of 17 DMUs from the consortium Bombardier/Stadler/HSY. These GTW have been the backbone of the rail transport between the Airport and the City during the Olympic games 2004 in Athens. Part of the same contract are 12 DMUs in metre gauge version which operated on the Peloponnes lines.

Stadler Bussnang AG
Industriestrasse 4
CH-9565 Bussnang, Switzerland
Phone +41 (0)71 626 20 20
Fax +41 (0)71 626 20 21
stadler.bussnang@stadlerrail.ch

A Stadler Rail Group company
Industriestrasse 1
CH-9565 Bussnang, Switzerland
Phone +41 (0)71 626 21 20
Fax +41 (0)71 626 21 28
stadler.rail@stadlerrail.ch

www.stadlerrail.com



Technical features

- Bright, friendly interior with large window areas
- Stepless passenger compartment with wide doors: low floor section > 66%
- Air-conditioned passenger and driver compartments
- Destination displays and passenger information system
- Closed toilet system with easy access for the disabled
- Spacious multipurpose area in entrance section
- Traction equipment housed in a separate drive module with an 800 mm aisle for passengers, effectively insulating the passenger compartments from noise and vibration sources
- Extruded aluminium superstructure
- Train adapted for 80-metre curve radius
- Powerful drive unit consisting of a diesel engine with three-phase generator, rectifier, air-cooled IGBT power converter and two self-cooling asynchronous motors
- MITRAC vehicle control with diagnostic computer

Vehicle data

Customer	Hellenic Railways Organisation (OSE)
Lines operated	Sourroundings of Athens
Gauge	1'435 mm
Designation	Railbus type 560
Axle arrangement	2' Bo 2'
Number of vehicles	17
Service startup	2003/2004
Seating capacity (2nd class)	78
Fold up seats	16
Standing capacity	106
Floor height	
Low floor	585 mm
High floor	1'000 mm
Door width	1'350 mm
Longitudinal strength	1'500 kN
Overall length	35'189 mm
Vehicle width	3'000 mm
Vehicle height	4'011 mm
Tare weight	56 t
Bogie wheelbase	2'100 mm
Powered wheel diameter (new)	860 mm
Trailer wheel diameter (new)	750 mm
Diesel engine	MTU, 550 kW
Maximum output at wheel	400 kW
Starting tractive power	55 kN
Maximum acceleration	1.0 m/s ²
Maximum speed	115 kph

